



METRONICS STAHL



SIMPLIFY EVERYTHING

□ COMPANY PROFILE

MEHTA GROUP is known worldwide as the most competitive group in the world of Stainless Steel having its headquarters in **Mumbai – India**. It was incorporated in the year 1975 by 3 dynamic leaders named as **Mr. Babulal Mehta, Mr. Jugal Mehta & Mr. Vallabhchand Mehta** & they are the reason behind the exponential growth of Mehta Group Companies.

Since last 3 decades, from the journey of Trader to Manufacturer, the group has achieved excellence in every business & is dedicated in providing “**Quality with low Cost Production**”.

The Group has a setup of overall **3 Manufacturing Plants & 5 Trading houses & Offices** in India, with more than 150 dedicated people, working as partners to continuously win Customers Confidence.

We pledge to establish relationships and gain trust through the expertise and focus on every customer & also provide the services needed to ensure that our product continues to operate in the most efficient way possible throughout its lifecycle.



METRONICS STAHL, an ISO 9001:2008 Certified Company, is a leading Manufacturer & Exporter in the world of **Precision CNC Turned Components** i.e. customized as per the customers' requirement & specifications.

We combine our expertise with innovative solutions & also provide the services needed, to ensure that our product continues to operate in the most efficient way possible throughout its lifecycle & thus sharing the 3 important key drivers: **Efficiency, Reliability & Value for Money.**

These products are manufactured using advanced Technology & latest Machinery & Every person in the organization strives hard to deliver **"Excellence"** to the customer by executing each process better than the best.

Our **"Customer – First"** approach sets us apart from the competition which helps us to believe in long – term & mutually beneficial relationship with our customers.

Vision

Is to expand its market positions to become the world's leader in **Precision Components Industry** by pursuing world-leading Manufacturing Technologies, Innovative Solutions, Quality & Customer Service



Metronics Stahl, is engaged in the business of **Design, Engineering & Manufacturing** of Precision CNC Turned Components i.e. customized as per the Customers' Requirement & Specifications, with a commitment of meeting stiff demands on Quality, Performance, Reliability, complying with International Standards.

A summary of the products offered are listed further :



PRECISION CNC TURNED COMPONENTS



CNC Turned Components are an integral part of many machines & need to be perfectly made to increase the productivity of any machine where they are inserted.

Our company offers a large assortment of Precision CNC Turned Components that are capable to meet all the International Standard Parameters which is as per the Customers' Requirement & Specifications

Features : High Tensile Strength, Dimensional Stability, Corrosion Resistance.

Application : Vehicle Suspensions, Gearboxes, Connecting Rods, Material Handling Equipment's, Automobile Industry, Hydraulic Industry, Electrical, Nozzle Industry, Surgical Industry, Oil & Gas Industry, Food & Dairy Industry.

Grade : SS 1.4305 (303), 1.4301 (304), 1.4307 (304L), 1.4401 (316), 1.4404 (316L), 1.4571 (316 Ti), 1.4021(420), 1.4057 (431 Din), Duplex, Carbon Steel, Brass & Aluminum.

Size : As per the Customers' Requirement & Specifications





FASTENERS

We are renowned in the industry as a leading Manufacturing & Exporting a Quality assured assortment of industrial fasteners. Our range of fasteners are:

Turned or Machined Nuts : Our Product Ranges from Coupling Nuts, Collar Nuts, Castle Nuts, Dome Nuts, Shear Nuts, Knurled Nuts, Lock Nuts, Eye Nuts, Wing Nuts, Sleeve Nuts, Case Nuts, Hex Nuts, Threaded Nuts, Special Nuts & Other Special Nuts made as per drawing & requirement.



Turned or Machined Screws : Our Product Ranges from Thumb Screw, Slotted Screws, Knurled Screws, Capstan Screws, Ball Screws, Button Head Cap Screws, Socket Head Cap Screws, Socket Head Screws, Socket Set Screws & Others Special Screws made as per drawing & requirement.



Turned or Machined Bolts & Studs : We are engaged in Manufacturing, Supplying & Exporting superior Quality Bolts like: Shear Bolts, Hex Bolts, Round Bolts, T Bolts & also into Engineering Studs & Others Special Bolts & Studs as per drawing & requirement.



FASTENERS



Plug & Pins : In order to serve different purposes of Automobile Industrial needs, we are also engaged in Manufacturing, Supplying & Exporting of CNC Auto Components like Pins, Studs & many Other Products in various Sizes & Design as per Customer Requirement & Specifications



Threaded Rods/Bar : We are engaged in Manufacturing, Supplying & Exporting superior Quality of Threaded Rods.



Washers : We offer our clients a wide variety of Industrial Washers, ranging from : Square/Round Spring Washers, Plain Washers, Metal Washers, Spring Washers, Lock Washers, Star Washers, Turned Plain, Cup Washers, Taper Washers, Special Washers & many Other Products in various Sizes & Design as per Customer Requirement & Specifications



Self Clinching Nuts : We offer Anti - Abrasive Self Clinching Nuts in Customized Dimensions.



PISTON RODS & SHAFTS

We also offer Piston rods & shafts as per Customers Requirement & Specification.

Applications: For Pneumatic Cylinders, Hydraulic Cylinders.

Size: As per the Customers' Requirement & Specifications

Material: Stainless Steel

Grade: 304, 316, 420



5 AXIS MACHINED COMPONENTS

We also offer 5 Axis Machined Components which are highly used in various industry like **Railway, Automobile.**

Application: Engines

Size: As per the Customers' Requirement & Specifications

Material: Stainless Steel



OTHER TYPES OF CNC TURNED COMPONENTS



Nozzels

Stubends

Special Bushes & Connectors

Sprinklers

Standoff & Spacers

Components for Automobile Industry

Components for Oil & Gas Industry

Switch Gear Components

Customized i.e. As Per The Customers' Requirement & Specifications.



PRODUCTS SPECIFICATION

Grade: All Kind of Metals (Specialized in Stainless Steel A1, A2, A4, 1.4305 (303), 1.4301 (304), 1.4307 (304L), 1.4401 (316), 1.4404 (316L), 1.4571 (316 Ti), 1.4021(420), 1.4057 (431 Din)

Other Metals: Brass, Monel, Inconel, Duplex, Copper Various Carbon Steel & Aluminum Grades

Standard: DIN, ISO, BS, EN, IS, ASTM, AMS & other European & American Standards.

Finish: As As Per The Customers' Requirement

Size: Max. Dia. 500 mm X Length 500 mm

□ INFRASTRUCTURE

MACHINES

CNC Turning	Marking Machine
Lathes Machines	Traub Machine
Band Saw/ Hack Saw	Drilling Machine
Compressor	Buff & Tool Grinder
Milling Machine	Tapping Machine

INSPECTION INSTRUMENTS

Digital Micrometers	Ring Guage
Digital Vernier Calipers	Dial Guage
Thread Guage	Plug Guage
CMM (Co-ordinate Measuring Machine)	Hardness Tester
Go & No Go Guage	Customized Guages

PROCESS

Machining	Milling
Slotting	Drilling
Threading	Boring
Tapping	Turning
Polishing	Grinding

Apart from mentioned facilities & Process, we also provide our customers with a wide range of **Surface Finishing, Heat Treating, Coating & Plating of SS Parts.**

We have well dedicated tool room for fulfilling our Internal requirements of **Jigs & Fixtures.**

□ QUALITY ASSURANCE

Since our inception, Quality standardization has always been our prime objective.

The offered products are manufactured on very high Precise CNC Machines & Regular Quality checks up are carried out at proper intervals as per Quality Control Procedures to keep the parts well within the tolerance bands. These Precision Components are inspected on sampling basis on **CMM (Co-ordinate Measuring Machine)** thus eliminating the element of human error.

Quality Control Procedure:

Incoming Inspection : Raw Materials are inspected for Dimensional Properties Like: Tolerance, Lobbing, Out – Of – Roundness, Length, Straightness, Chemical & Mechanical Properties & Surface.

In-Process Inspection : Procedures are defined to the minutest details. These procedures enable Operators, Supervisors & Quality Control Inspectors to produce the best quality products.

Finished Goods Inspection : The Quality Assurance team in the finished goods department - we call them **“Metronics Internal Customer”**. They inspect materials from the customer’s

perspective. Finished Goods are inspected as per customer specification for:

Surface Finish, Dimensional Properties such as Tolerance, Lobbing, Out – Of – Roundness, Length, Straightness, Properties, Packing, Color Coding, Marking.



**“Customers
Are Wheels of
An Organization”.**

□ GROUP COMPANIES

At Mehta Group, Quality is an ongoing process beginning with:

Discussion, Production, On - Time Delivery, Customer Care & the most important after - market Service.

To achieve these values, we are in the process of automating our tasks & updating our procedures.

Thus, satisfying our faithful clients and a total commitment for offering the best-ever competitive services and products.”

□ MISSION

“The Group aims to strengthening its global market position by developing its product range across its business segments & capitalize on regional expansion opportunities.” More focuses are being made on:

➤ Product Quality

➤ Service Network

➤ Brand Awareness

➤ Quality with low Cost Production

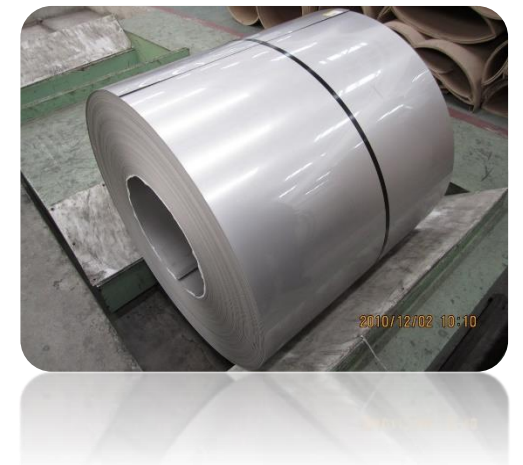


In **1975**, **Mehta Group** started with a trading company as **Metallica Metals India** who is well known for Supply & Stockiest of **Stainless Steel Pipes & Pipes Fittings**.

Further, In **1980**, the Group expanded its business by diversifying it into **Carbon Steel Pipes** as per ASTM A 106, IS: 1239, IS: 3589 & EN-8, 9, 24, 36 & also **Alloy Steel Pipes**

Adding to it, the Group is actively involved in various other Stainless Steel Products like **Sheets, Coils, Flanges, Tube & Plates**.

It also has strong presence in high-tech industries of Domestic Market



Further, the companies also started with Export & in order to meet the growing needs of Export & Domestic markets & to serve our Existing & New Customer under one roof in the year **2006, Mehta Group** Started with a **Manufacturing Plant of Precision Tube Fittings & Instrumentation Valves** in different Sizes & Metals like Stainless Steel, Brass, Duplex, Super Duplex, Inconel & Monel & in various Other Metals as per the customer's specific requirements & Specifications under the brand name **“Met – Lok”**.



TUBE FITTINGS & INSTRUMENTATION VALVES



Tube Fittings:

Size: 1/8" to 1" & 4mm to 25mm with variety of end connections like NPT, BSP & BSPT.

Grade: Stainless Steel of all grades, Monel, Brass, C.S etc.



Ball Valve:

Size: 1/8" to 1" with NPT, BSP, BSPT male/female end connections.

Application: Gas Sampling lines, Pneumatic systems, Industrial R O Plants

Type: 2/3/4/5 way, 1/2/3 piece, Quarter/Half/Full turn i.e. 'L' port (90), 'T' port (full turn)



Manifold Valves:

Type: 2/3/5 Valve Manifolds are available with remote or separate mounted.

Grade: Stainless Steel of all grades, Monel, Brass, C.S etc.



Monoflanges:

Standard: ASTM A350 LF2/A105, ASTM A182 F316/F316L and ASTM A182 F51. Valves can be supplied to NACE MR- 01-75 specifications too.

Applications: Block & Bleed, Pressure Measurement, Sampling, Flow Measurement

Others: Gate Valves, Plug Valve & as per Customer's Drawings & Specifications

In **2008**, the Group started **Importing Inconel, Monel, Hastelloy Pipes & Pipes Fittings** (like Elbows, Bends, Tees, Reducers, & Caps) and also started keeping a stock of the same and other products of Stainless Steel like Rods, Sheets, Etc..



Further, in order to meet the demand of the customers across the world, In the year **2010**, the Group started with one more Manufacturing unit of Fittings and Exporting diversified products other than Stainless Steel like: **Nickel Alloys, Galvanized Pipes, Mild Steel Pipes, Copper Tubes, Capillary Tubes, Fittings, Thermowell** in different sizes & various other metals as per the Customer's Requirements & Specifications.

MEHTA GROUP, TIMELINE

More To Come

Metallica Metals India

Stockiest of Stainless
Steel Pipes & Fittings,
Flange, Carbon Steel &
Alloy Steel Pipes.



1975

MET-LOK

Valves & Fittings.

Manufacturing Precision
Tube Fittings &
Instrumentation Valves
as per the customer's
specific requirements



2006

Aston Steel Pvt. Ltd.

Import & Stockiest of
Inconel, Monel,
Hastealloy, Pipes
Fittings (like Elbows,
Bends, Tees, Reducers,
& Caps), Rods, Sheets.



2008

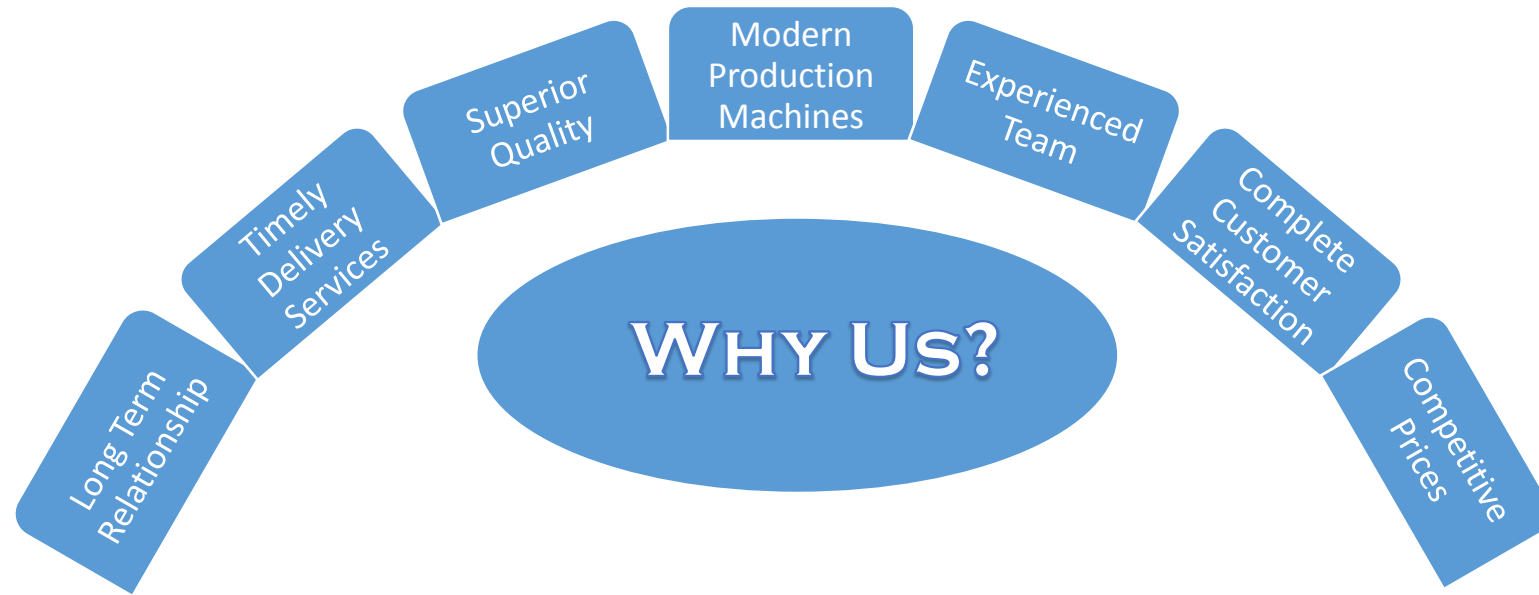
Evergreen Steel

Manufacturer & Exporter
in Alloy Steel, Inconel,
Monel, Nickel Alloys,
Stainless Steel & Carbon
Steel Seamless & Welded
Pipes & Pipe Fittings in
different sizes & various
other metals.

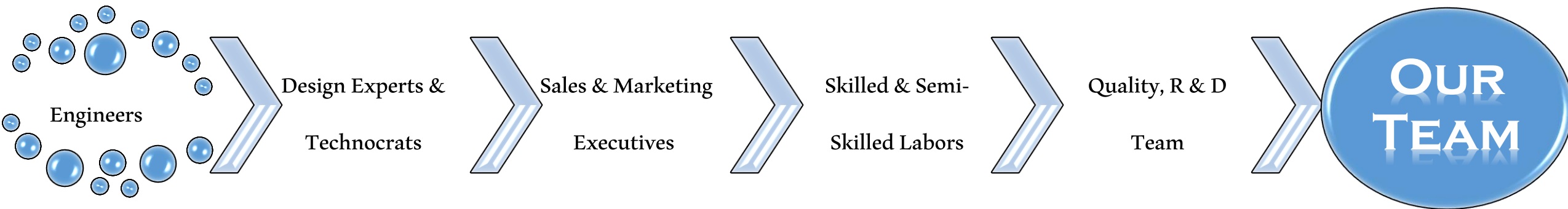


2011

2014



In order to ensure customer satisfaction, these experts comes out with **New & Creative Ideas** & many Training Sessions & Workshops are also conducted in our organization to improve the skills of our employees.



The Technical Knowledge & a more close personal involvement of **Top Management** on the work shop floor make us different from other players in the industry.



CHEMICAL INDUSTRY



FOOD & DAIRY INDUSTRY



AVIATION INDUSTRY



OIL & GAS INDUSTRY



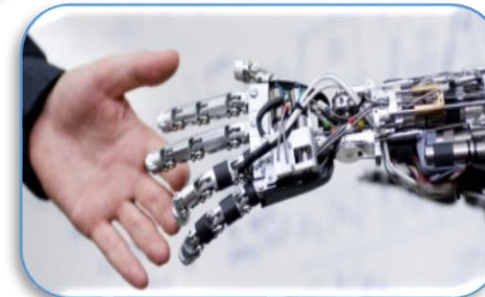
AUTOMOBILE INDUSTRY

ELECTRONIC SECTOR

ENERGY SECTOR



RAILWAYS SECTOR



**PHARMACEUTICAL
INDUSTRY**



APPLICATIONS

MEHTA GROUP has delighted customers in more than 78 countries across the Globe.



ADDRESS :-

Registered Office:

13/21, 3rd Panjarapole, Floor 2nd,
Seth Virchand Umarsi Bldg,
Office no.: 210, Mumbai: 400 004

Works Address:

C1B-11&12, GIDC,
Umbergaon – 396 171,
DIST. Valsad, Gujarat (India).

CONTACT DETAILS.:

Ashwin Mehta: +91 9930 354 666

(B.Tech – Mechanical, MBA – Finance)

Email: ashwin@metronicsstahl.com

Pratik Mehta: + 91 9892 796 675

(B.Tech – Mechanical, MBA – Finance)

Email: pratik@metronicsstahl.com

-  **HEADQUARTERS & MANUFACTURING UNITS**
-  **EXPORTING COUNTRIES**
-  **IMPORTING COUNTRIES**
-  **DOMESTIC**



WWW.METRONICSSTAHL.COM